



Rear Speaker Installation



HD Ultra Classic (1998 to 2013)

Crimp the round connector pins to the aftermarket radio harness rear speaker wires (the green and purple outputs). Alternatively, if connector pins are not available, you can strip the insulation and insert approximately 3/8" of the wires into the factory harness. It is a good idea to tin the wires lightly with solder.

Insulate the exposed portion of the contact pins with heat shrinkable tubing.

Locate the rear speaker harness that is *not* connected to the new radio interface. Insert contact pins into the harness connector according to the appropriate diagram.

Secure the four speaker wires to the harness with electrical tape and/or zip ties.

Note: Harley-Davidson® part number for individual contact pins: 72190-94



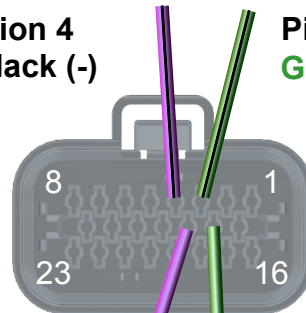
1998 — 2005

23 Pin Plug



Pin Position 4
Purple/Black (-)

Pin Position 3
Green/Black (-)

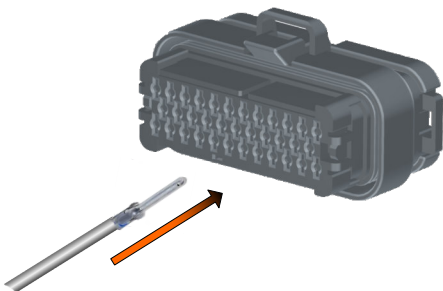


Pin Position 11
Purple (+)

Pin Position 10
Green (+)

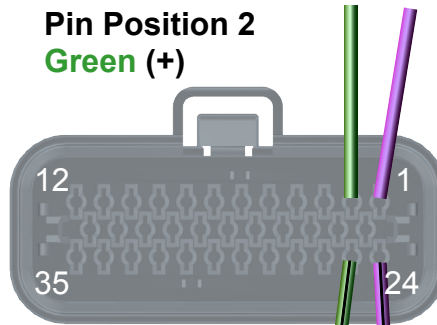
2005 — 2013

35 Pin Plug



Pin Position 2
Green (+)

Pin Position 1
Purple (+)



Pin Position 25
Green/Black (-)

Pin Position 24
Purple/Black (-)